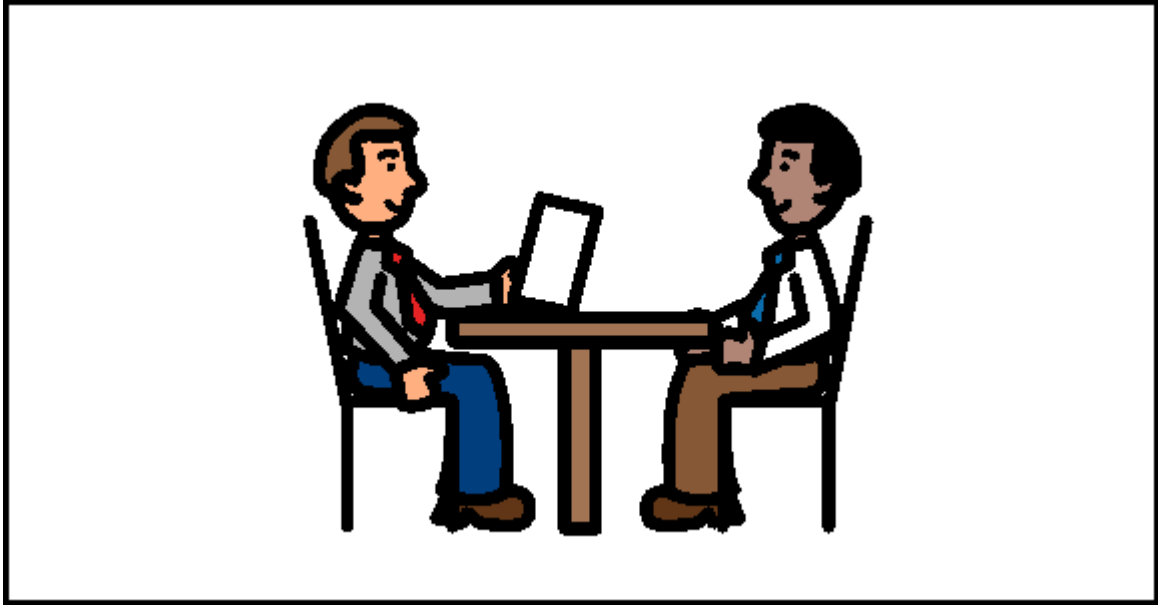


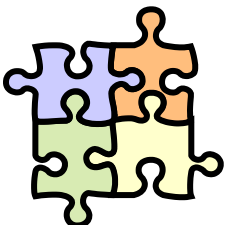
Illinois Voices



INTERNAL ATTITUDINAL ACCESSIBILITY SURVEY

***Developed by the Illinois Voices Project Team
with support from the
Illinois Department of Human Services (DHS) – 2006***

The Picture Communication Symbols © 19812006 by Mayer-Johnson LLC.
All Rights Reserved Worldwide. Used with permission.

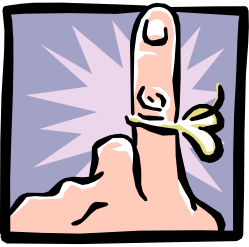


**Illinois Voices: Putting together the pieces of the
self-advocacy puzzle.**

Learn more about Illinois Voices by visiting our website at www.illinoisvoices.com

The pictures used in the Internal Attitudinal Accessibility Survey are PCS Picture Maker from Mayer-Johnson. For more information, please contact Mayer-Johnson at

Mayer-Johnson LLC
P.O. Box 1579
Solana Beach, CA 92075 USA
Phone: 858-550-0084
Fax: 858-550-0449
Email: mayerj@mayer-johnson.com
Web site: www.mayer-johnson.com



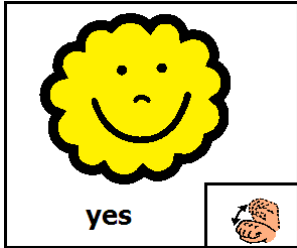
NOTE TO SURVEYORS – The Internal Attitudinal Accessibility Survey is intended to be used as a support tool for persons with developmental disabilities to evaluate the attitudes of the staff who support them within their agency program.

Provide a safe, confidential environment of the person’s choice when using the Internal Attitudinal Accessibility Survey. Please follow up on ***all*** responses by asking “how” and “tell me more” to gain more information and to help the person express what is important as well as how to achieve greater independence in those areas. Show the person that you are interested in what is being said by facing them and maintaining eye contact. Because so much of communication is done through non-verbal behavior, ensure that your body language is positive and supportive vs. judgmental and negative.

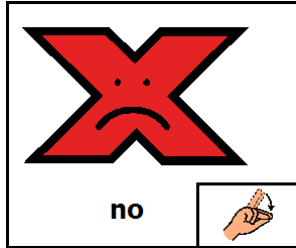
There is a reproducible Internal Attitudinal Accessibility Feedback Sheet at the end of the resource that you may use to document responses.

Please remember to follow your agency’s policies and procedures to report any allegations of abuse, neglect, or restrictions of rights that may be disclosed during the survey.

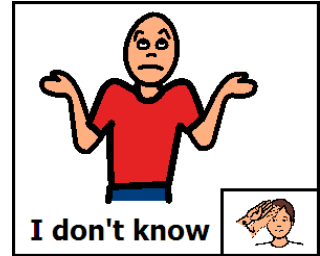
Can you go into all rooms in your home ?



yes

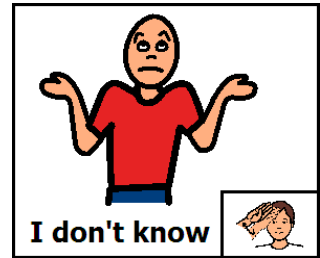
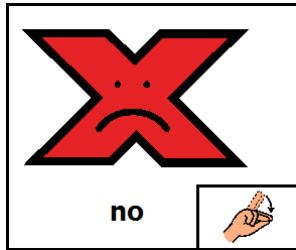
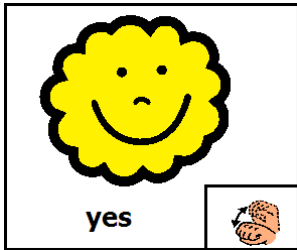


no



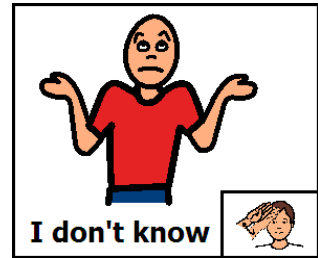
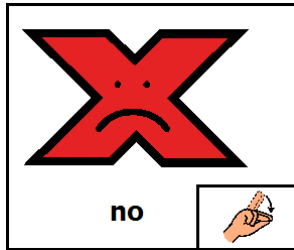
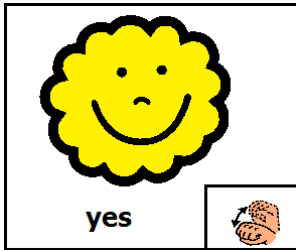
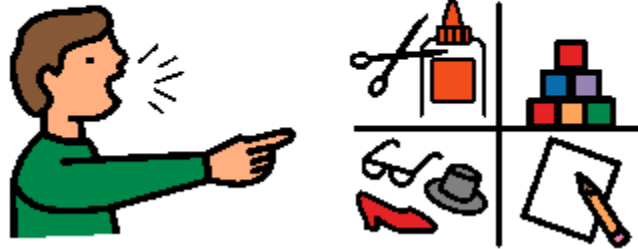
I don't know

Comments:



Comments:

Can you choose what you want to do for activities?



Comments:

Can you choose where you want to go
to church? shopping? etc?



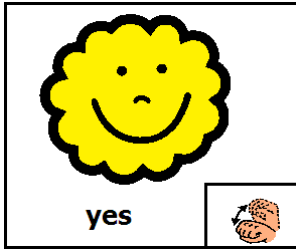
I want



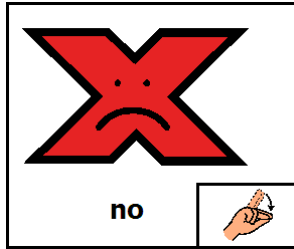
church



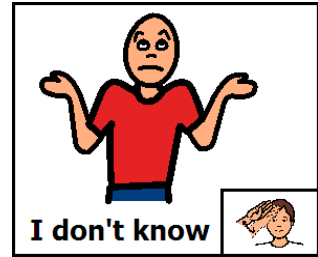
shopping



yes



no




I don't know

Comments:



Do you pick your own clothes to wear?



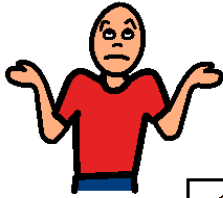

clothes closet




yes



no



I don't know

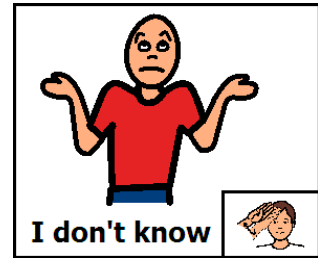
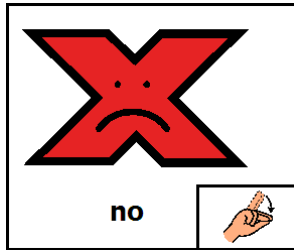
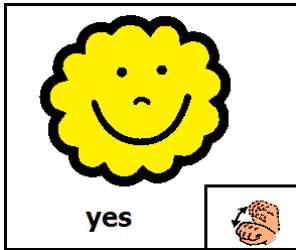
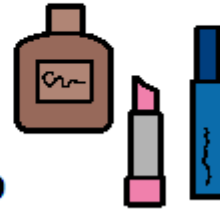


Comments:

Can you wear make-up if you want?



make-up



Comments:

Can you choose your hair style?

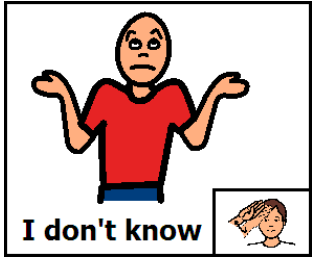
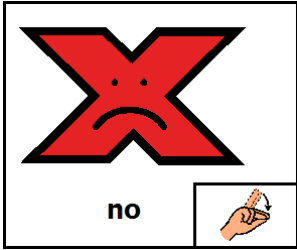
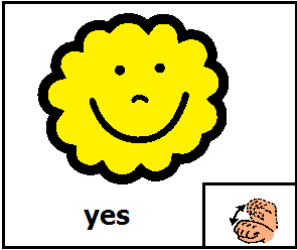
spiked bald long or short haircut hair color perm

yes

no

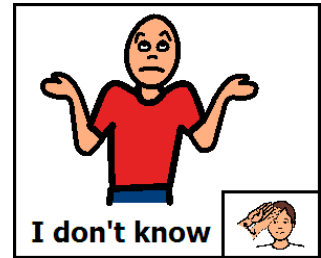
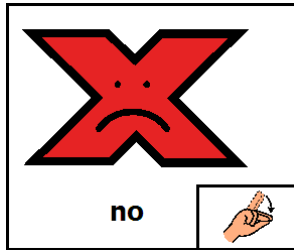
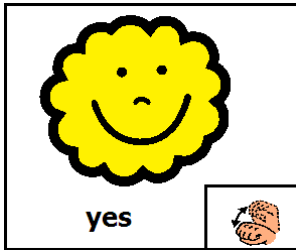
I don't know

Comments:



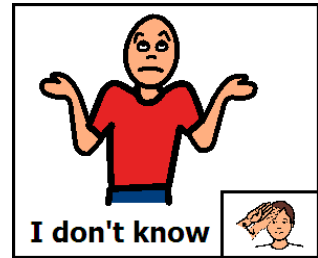
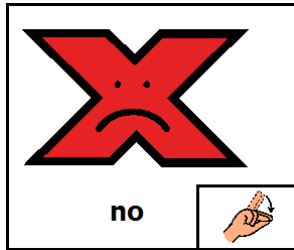
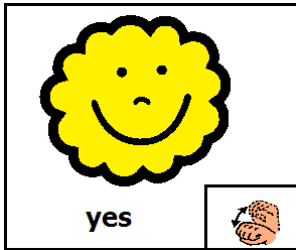
Comments:

Can you get the cologne, deodorant, and toothpaste when you want?



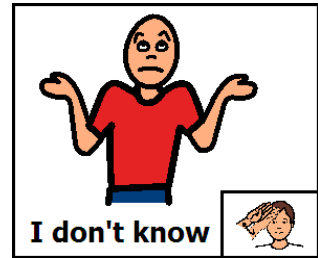
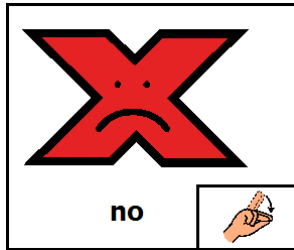
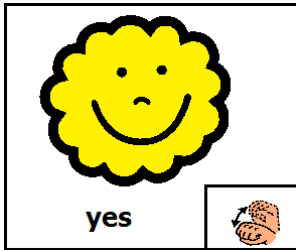
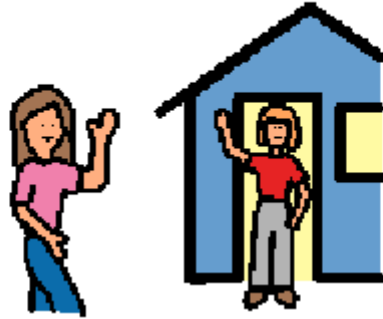
Comments:

Are you given choices for meals?



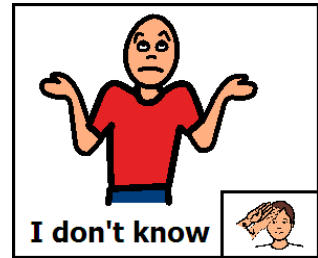
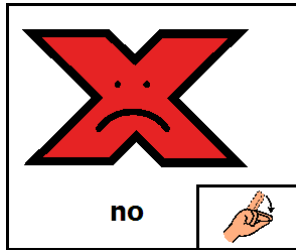
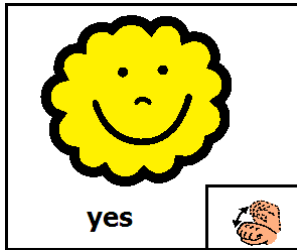
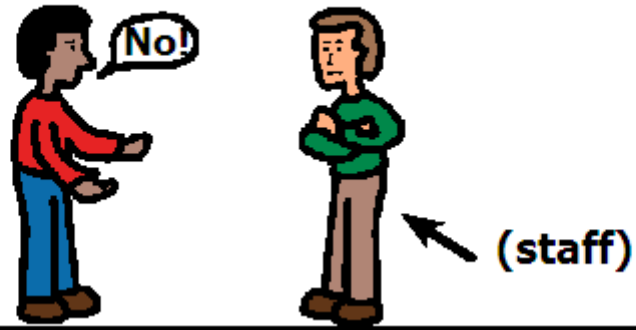
Comments:

Can you visit your friends and family when you want ?



Comments:

Do staff respect your choice if you tell them "No" ?

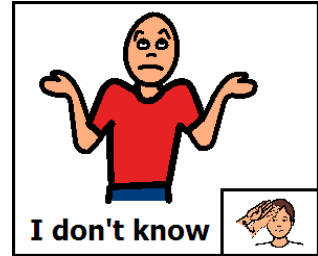
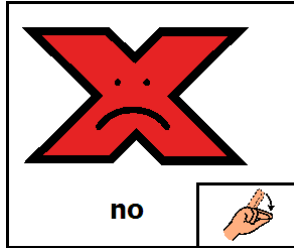
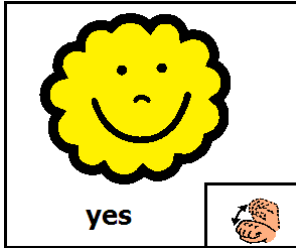


Comments:

Do staff respect your choice if you tell them that you don't want him/her to work with you ?

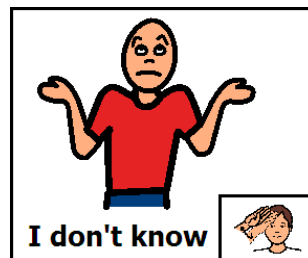
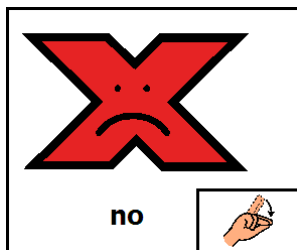
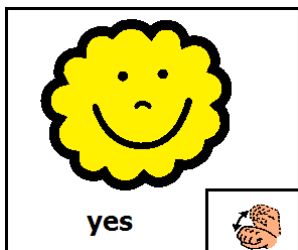


I don't want



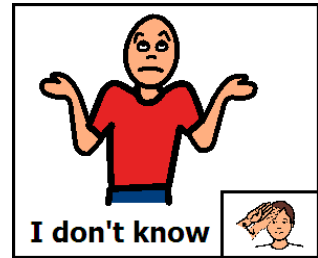
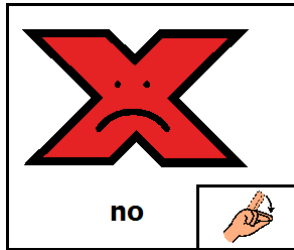
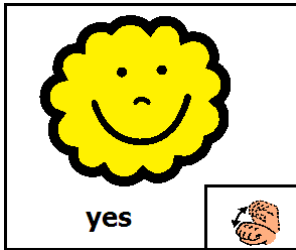
Comments:

Can you sit where and with whom you choose ?



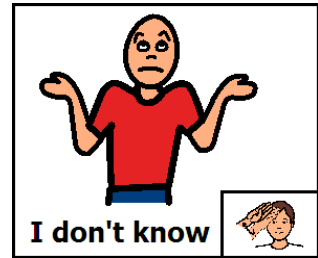
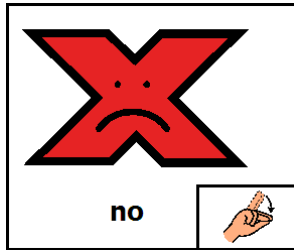
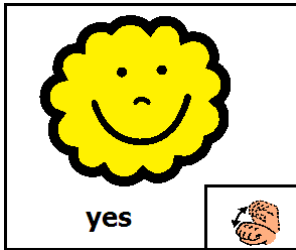
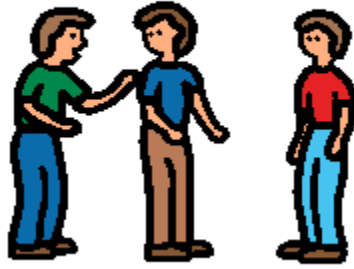
Comments:

Do you feel staff listens to you?



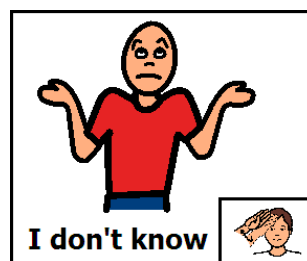
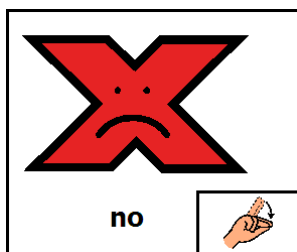
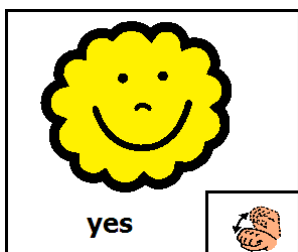
Comments:

Do staff respond to your wishes?



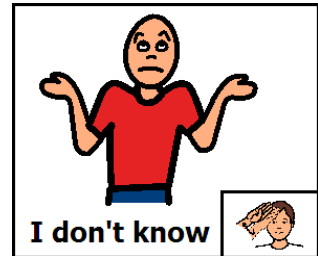
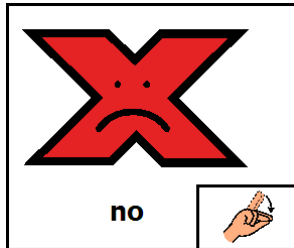
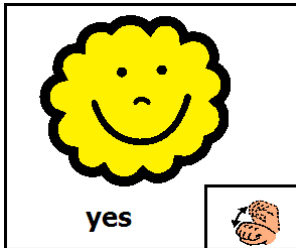
Comments:

Are staff respectful and supportive if you make a mistake?



Comments:

Do you feel staff talk nicely to you?



Comments:

INTERNAL ATTITUDINAL ACCESSIBILITY SURVEY

Feedback Sheet

Name: _____

Program Site: _____

Surveyor: _____

Date: _____

Can you go into all rooms in your home?

Can you go in and out of your home whenever you want?

Can you choose what you want to do for activities?

Can you choose where you want to go to church? shopping? etc?

Do you pick your own clothes to wear?

Can you wear make-up if you want?

Can you choose your hair style?

Will staff help you with your hair? clothes? etc. if you ask?

Can you get the cologne, deodorant, and toothpaste when you want?

Are you given choices for meals?

Can you visit your friends and family when you want?

Do staff respect your choice if you tell them "No"?

Do staff respect your choice if you tell them that you don't want him/her to work with you?

Can you sit where and with whom you choose?

Do you feel staff listens to you?

Do staff respond to your wishes?

Are staff respectful and supportive if you make a mistake?

Do you feel staff talk nicely to you?

Special thanks go out to the following people who made this resource a reality:

Krescene Beck
Sue DiFilippo
Kreider Services, Inc.
Shirley Paceley
Karen Randolph